

Specifications

1. Camera Function	
Image sensor	1/3-inch CMOS with primary color filter
Number of recorded pixels	4608 × 3456 (WIDE ANGLE switch ON & Micro SD card inserted) 2560 × 1920 (Others)
Storage media	Internal memory, microSD / microSDHC memory card
Storage capacity	Approximately 45 images on the internal memory, WIDE ANGLE switch ON: approximately 280 images WIDE ANGLE switch OFF: approximately 850 images per 1 GB in microSD / microSDHC memory card
Recording method	DCF compliant Exif Ver 2.3
Focus distance	f = 16 mm (35mm film equivalent)
Aperture	F2.4
Auto focus	Single AF, Face recognition AF (on/off) (with auxiliary light)
Shooting distance	10 cm to ∞
Shutter speed	1/4 second to 1/8000 second (automatic switching)
Shooting sensitivity	ISO100 to 1600 (automatic switching)
Exposure control	Program AE
Exposure compensation	-2.0 EV to +2.0 EV (1/3 EV step)
Metering method	TTL 256 split metering, multi metering
White balance	Auto, Fine, Shade, Fluorescent 1, Fluorescent 2, Fluorescent 3, Incandescent
Flash	AUTO FLASH / FORCED FLASH / SUPPRESSED FLASH Shooting range with flash: Approximately 30 cm to 1.5 m
Self-timer	Approximately 2 seconds / approximately 10 seconds
Image effects	10 lens effects with degree control functions, 10 film effects, and 6 film styles
2. Print function	
Exposure pixel count	1600 × 1260 dots (800 × 1260 dots when printed from smartphone app)
Exposure resolution	25 dots / mm × 12.5 dots / mm (635 × 318 dpi, 40 × 80 μm dot pitch) 12.5 dots / mm when printed from smartphone app (318 dpi, 80 μm dot pitch)
Exposure gradation	RGB gradation of 256 colors
Interface	Standard compliance: Bluetooth Ver. 5.1
Printable image format	From the camera's internal memory or microSD / microSDHC card: JPEG images taken with this camera From a smartphone: JPEG, PNG, HEIF
Print output time	Approximately 16 seconds
Print function	Images on the internal memory and images on the memory card can be printed
3. Other	
Smartphone app linked functions	Smartphone image print function, remote shooting function, printed image transfer function, firmware upgrade function
LCD screen	3.5-inch TFT color LCD screen Pixel count: Approximately 460,000 dots
External interface	USB Type-C port (for charging only)
Power supply	Lithium-ion battery (internal type)
Possible number of printed images	Approximately 100 (from full charge) The number of prints depends on the usage conditions.
Charging time	Approximately 2 to 3 hours Charging time depends on the temperature.
Main unit dimensions	138.7 mm x 125 mm x 62.8 mm (excluding projecting parts)
Main unit weight	Approximately 490 g (Film packs, recording media, and lens cap not included.)
Operating environment	Temperature: 5°C to 40°C Humidity: 20% to 80% (no condensation)
Film used	FUJIFILM instant film "instax™ WIDE" (sold separately)

•Images of instax printing are for illustrative purposes only. •The above specifications are subject to change for performance improvement. •Image size may affect print finish (sharpness, grain, etc.). •Time required for wireless communication may be affected by file size, smartphone model, etc. •Print finish (color, image quality, etc.) may be affected by smartphone model, shooting conditions, etc. •Actual print finish may differ from the image displayed on the LCD screen of your smartphone. •Smartphone screen images are superimposed. •FUJIFILM, instax, instax WIDE Evo and don't just take, give are registered trademarks or trademarks of FUJIFILM Corporation. •The Bluetooth® word mark and logo are registered trademarks of Bluetooth SIG, Inc. and FUJIFILM Corporation uses these under license. •QR code is a registered trademark of DENSO WAVE INCORPORATED. •INSTAGRAM is a trademark of INSTAGRAM, LLC.

instax.com

FUJIFILM

FUJIFILM Corporation

7-3, AKASAKA 9-CHOME, MINATO-KU,
TOKYO 107-0052, JAPAN

instax WIDE Evo™ APP



instax WIDE Evo

• Apple and the Apple logo are trademarks of Apple Inc., registered in the U.S. and other countries and regions. App Store is a service mark of Apple Inc.
• Google Play and the Google Play logo are trademarks of Google LLC.

ACCESSORIES

Camera Case



SUPPORTED FILM

Instant Film

instax™ WIDE

Film size : 86 mm x 108 mm
Image size : 62 mm x 99 mm



White frame

10 sheets x 1 pack
10 sheets x 2 packs



BRUSHED METALLICS

10 sheets x 1 pack

instax WIDE Evo™
special website



Have even more fun with the instax UP!™ App

Our app lets you easily digitize your instax™ photos in high resolution to share them with your friends!



FUJIFILM
Value from Innovation

instax™

make every shot a masterpiece

instax WIDE Evo™

HYBRID CAMERA

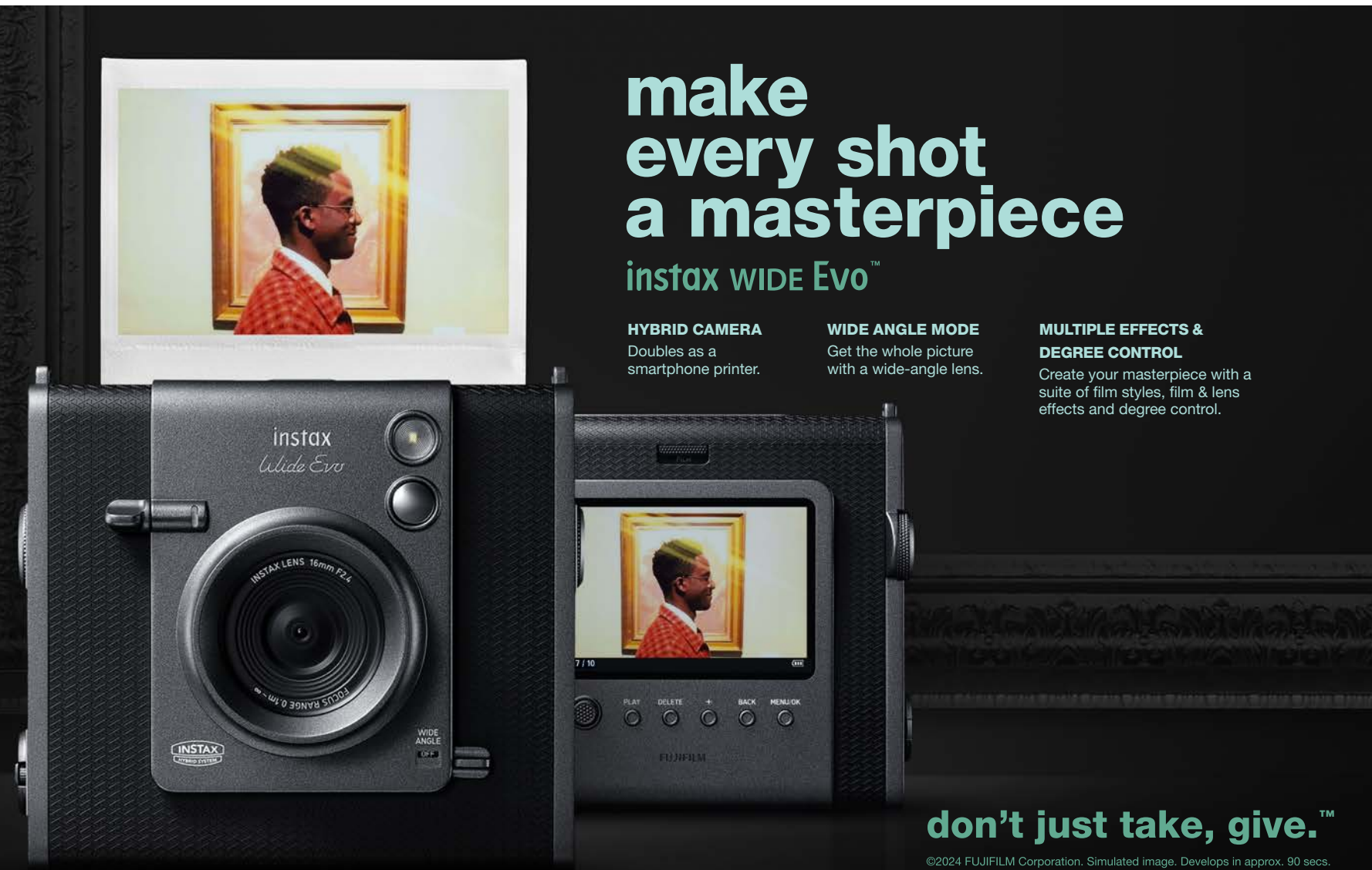
Doubles as a smartphone printer.

WIDE ANGLE MODE

Get the whole picture with a wide-angle lens.

MULTIPLE EFFECTS & DEGREE CONTROL

Create your masterpiece with a suite of film styles, film & lens effects and degree control.



don't just take, give.™

©2024 FUJIFILM Corporation. Simulated image. Develops in approx. 90 secs.

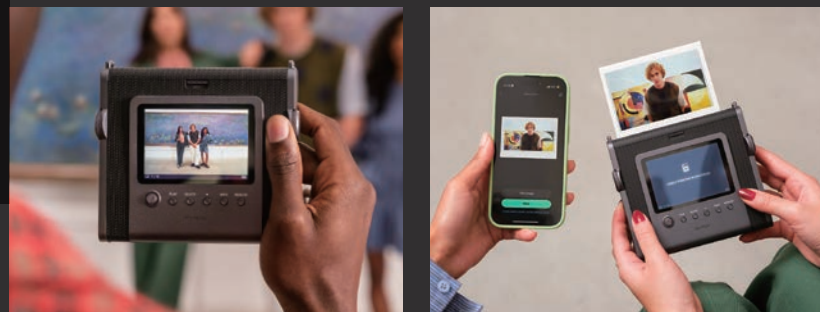
make every shot a masterpiece

Capture the entire scene in WIDE format



Our first WIDE format hybrid camera

Both a camera and a smartphone printer



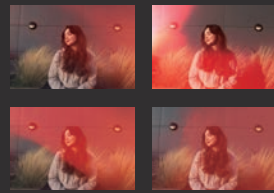
instax WIDE Evo™
Hybrid Instant Camera

Many features to help you capture your own unique instax™ images

Degree Control



Rotate the degree control dial and access hundreds of additional lens effect variants, taking your creative vision to the next level.



Wide Angle Mode

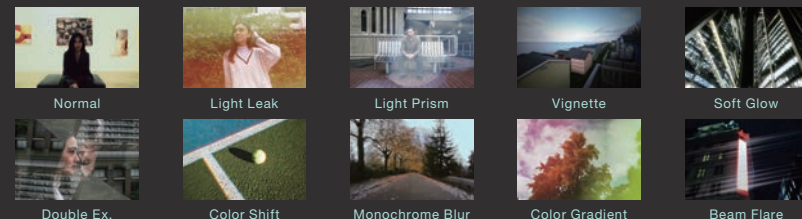


Equipped with the widest-angle lens in instax™ history! The incredible WIDE format gets even better with the flip of a switch!



Lens Effect

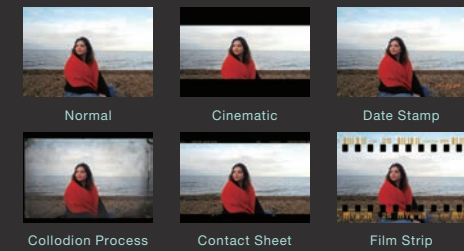
Set the light just how you want it with 10 different lens effects.



Film Style



Six unique frames are provided to elevate your creativity.



Print crank

Rotate the lever clockwise to print.

Shutter lever

Push the lever down to take a photo.

Lens cap

Protect your lens with the sleek lens cap.

Film Effect

Express incredible nuance with 10 different film effects.



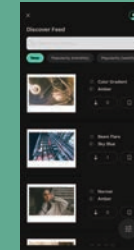
Take your creativity further in-app
instax WIDE Evo™ APP

01. Discover Feed



Post your photos to INSTAGRAM using #instaxwideevo

Agree to the consent statement in-app, post your photos on INSTAGRAM with the hashtag #instaxwideevo to make them eligible for display in the App's Discover Feed.



Use the App to share your creations with friends around the world!

Find yours and other users' photos & settings in the Discover Feed within the instax WIDE Evo™ APP!



Save your favorite settings and use them when taking new photos with the instax WIDE Evo™!

Save effects you've used in previous shots with ease. And if you're loving the effects used by someone else, you can download their settings too from the Discover Feed! Simply transfer the settings to your instax WIDE Evo™ over Bluetooth and you're ready to go.

02. Direct Print

Send images from your Smartphone to the camera and print them out.

03. Remote Shooting

Release the camera shutter using your Smartphone as a remote control.

*After agreeing to the consent statement, we select photos to be shown in the Discover Feed, so display is not guaranteed.
*The App screen may differ from the actual screen.